

Forestry and the Bio-economy; wood as a contemporary low carbon construction, design and energy resource

Des O'Toole

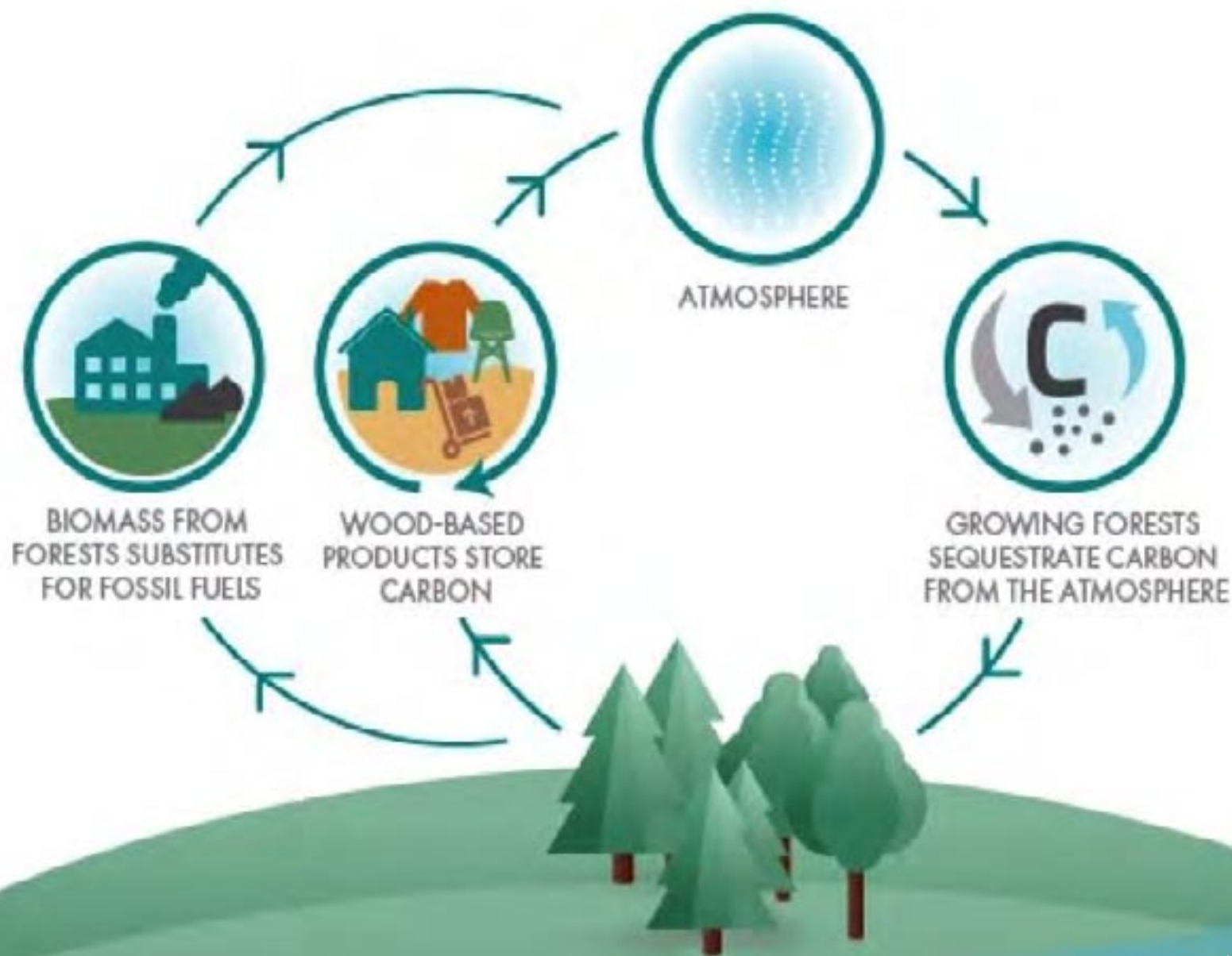
Market Development Manager Coillte

President of IrBEA





















CARBON CALCULATION

- KLH panels: approx. 740.8 tonnes of CO₂ removed from atmosphere
- Tonnes of emitted CO₂ from transporting 926m³ of timber to the project site - 33 tonnes
- Therefore a “net gain” of 707.8 tonnes
- **Total stored/sequestered carbon in KLH panels for the Stadthaus, Murray Grove – 222.2 tonnes**

- **Project Details:**
 - Location: London
 - Date: 2009
 - Supplier: KLH
 - Architect : Thistleton Waugh
- **Timber volume: 926m³**
- **Build period: 7 weeks**
- **29 apartments**

Stadthaus, Murray Grove – first 9 storey cross-laminated timber building in the world



Stadthaus, Murray Grove - Waugh Thistleton Architects



Take a seat on a tonne of CO₂



Contact

Des O'Toole
Market Development Manager

Mobile : 086 230 1234
email : otoole_d@coillte.ie



ie.linkedin.com/pub/dir/Des/O'toole



[@desotoole1](https://twitter.com/desotoole1)