



Daintree Building Dublin



Daintree Building Dublin



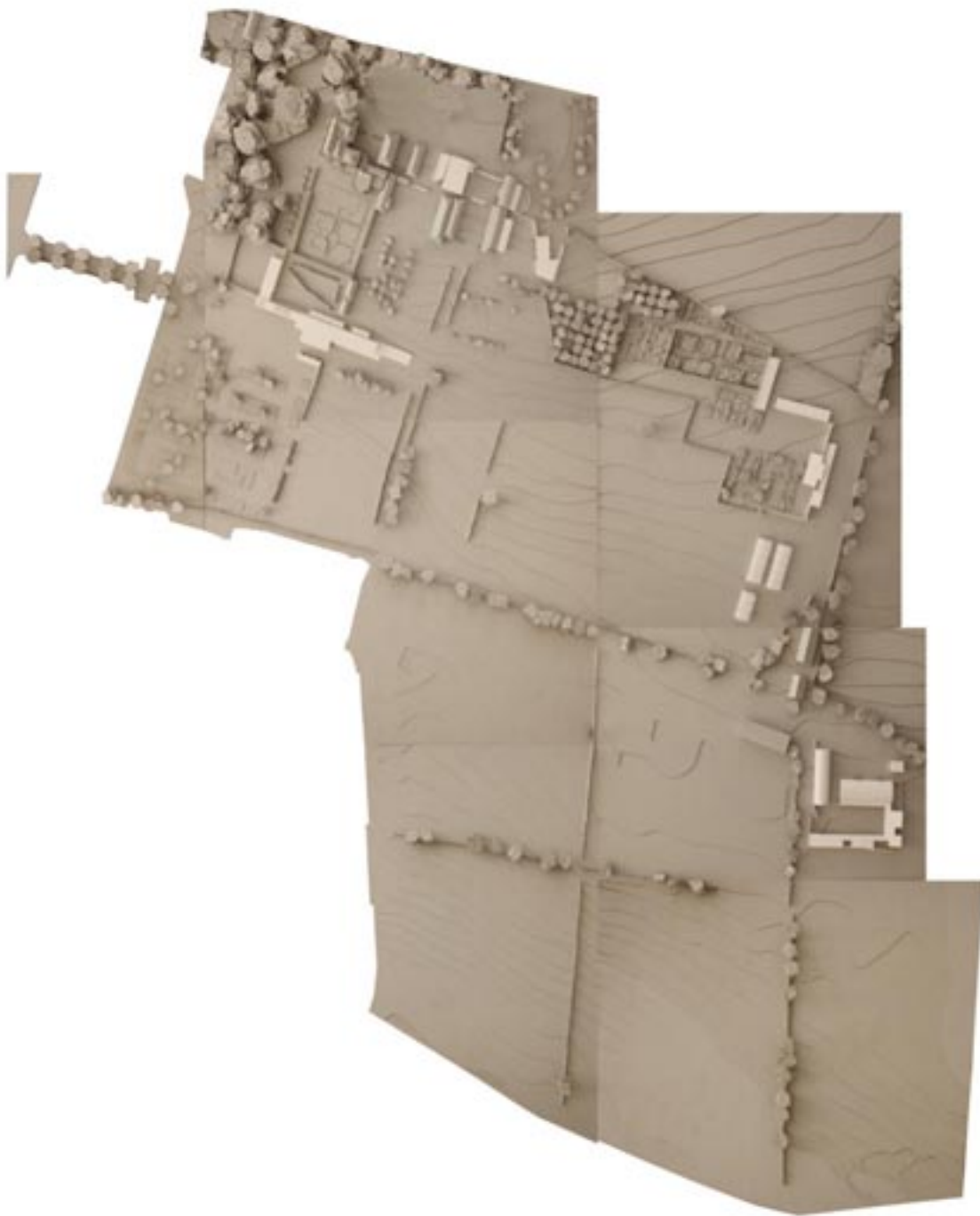
Daintree Building Dublin

Daintree Building Dublin

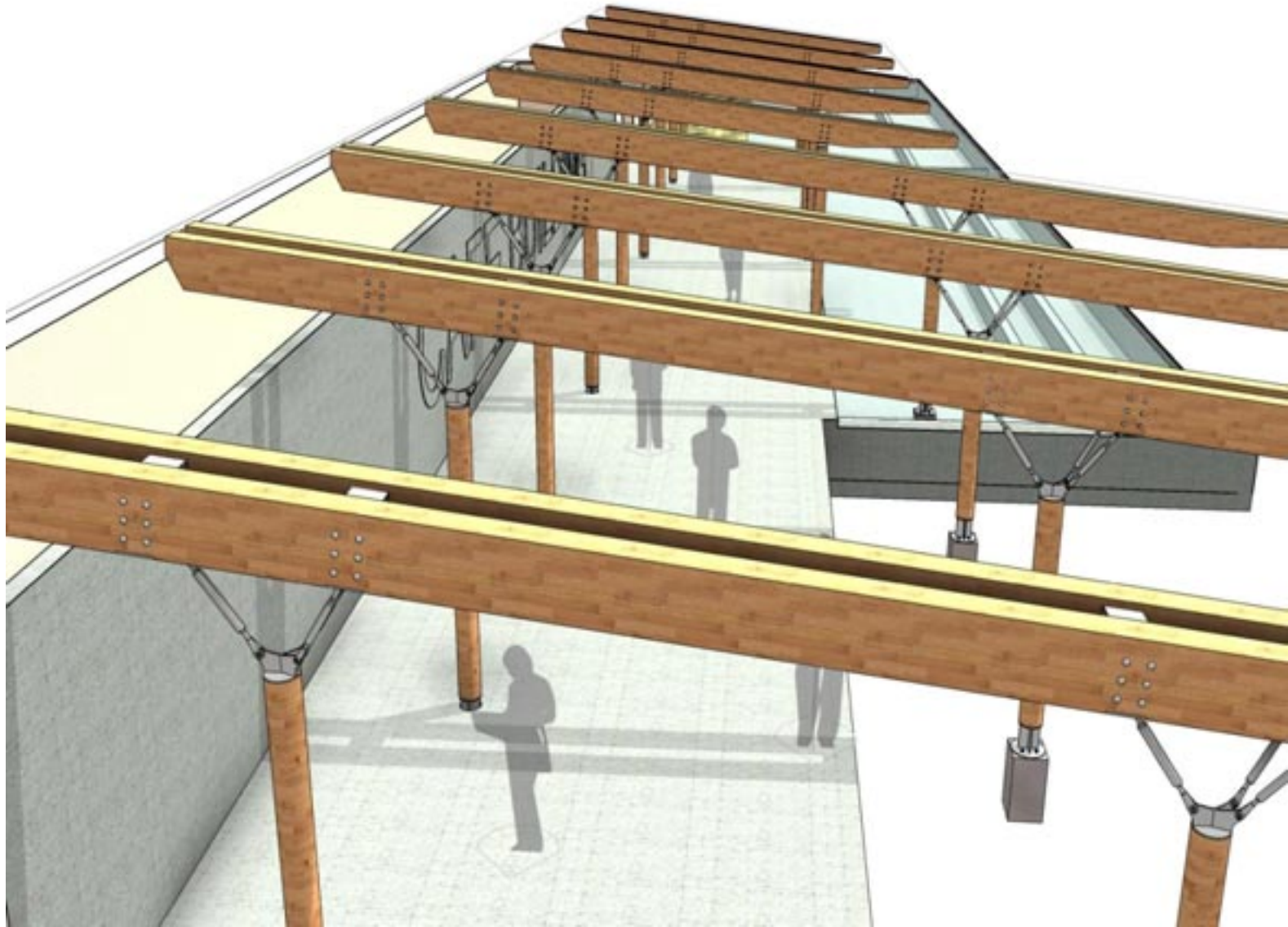




Airfield Estate Dublin



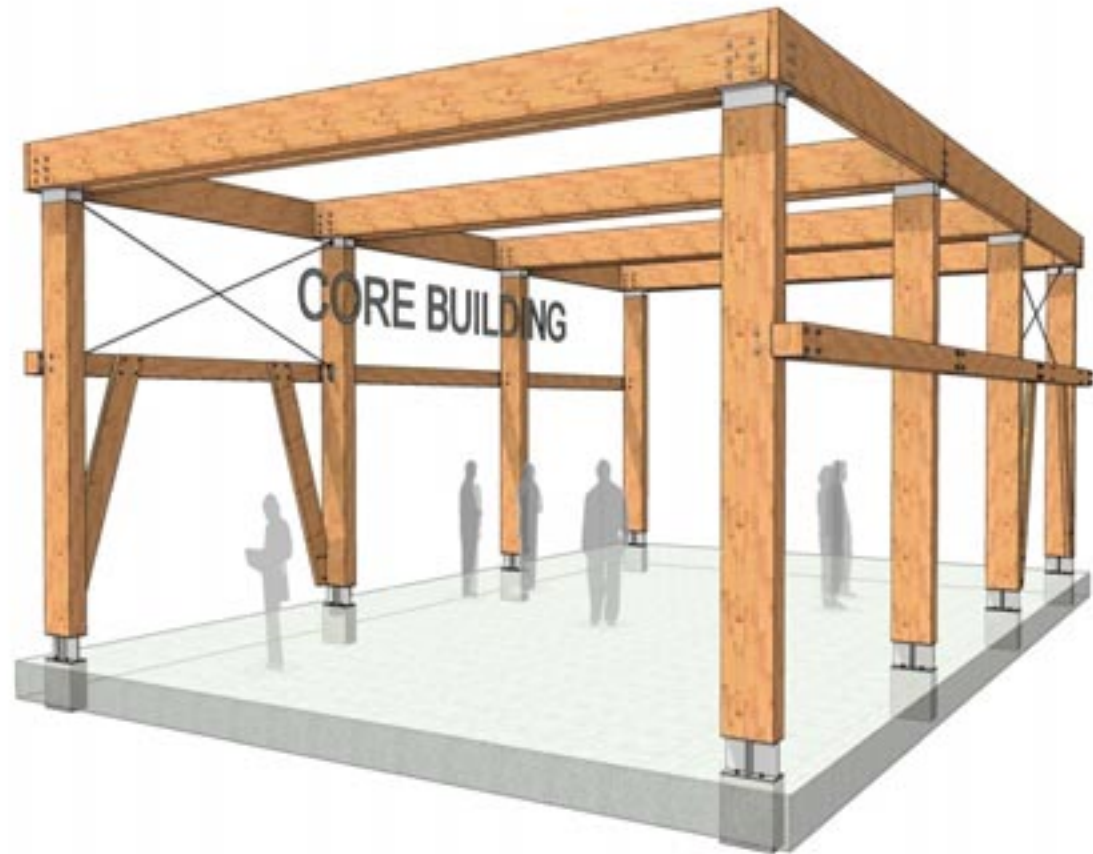
Airfield Estate Dublin



Airfield Estate Dublin



Airfield Estate Dublin



Airfield Estate Dublin



Airfield Estate Dublin



Airfield Estate Dublin



Airfield Estate Dublin



Airfield Estate Dublin



Airfield Estate Dublin



GIY HQ Waterford



GIY HQ Waterford



Cross Laminated Timber construction



Cross Laminated Timber construction



William Perkin sports hall FCB Architects

The use of thermal mass in a light weight construction to balance temperature gains passively.



Concrete soffit within timber frame
B-Mc Architects (2017)



Stadthaus, Hackney London, Murray Grove Architects

MAKING A 9 STOREY CONCRETE BUILDING EMITS 500T OF CO₂

MAKING A 9 STOREY TIMBER BUILDING SEQUESTERS 760T OF CO₂

Stockholm timber tower

